

① Product & Substrate Temperature

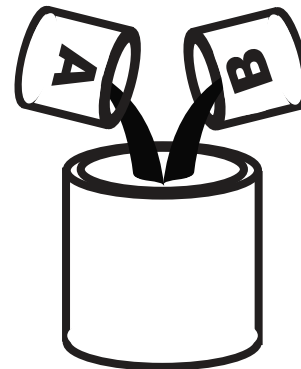


25°C (77°F)
20°C (68°F)

20-25 °C (68-77 °F)*



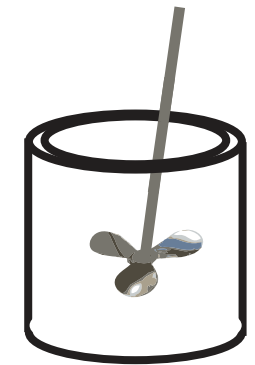
② Product Preparation



1 Part Component A
1 Part Component B



③ Mixing



Paint must be thoroughly mixed.

④ Spraying Viscosity



14 seconds**

As necessary**



conventional

airless

**Viscosity: 14 seconds/as necessary
using a Ford 4 Cup (white)**

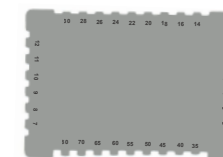
** Spraying viscosity and thinning will depend on ambient conditions, spray equipment used, and on the desired surface finish.

⑤ Spray Gun Setup



⑥ Application

Recommended Film Thickness



3.5 - 5.5 mils wet



1.5 - 2.5 mils DFT

Feed Type	Fluid Tip	Application Pressure	Fluid Delivery
Siphon Feed	1.6-1.8 mm	40-50 psi	
Gravity Feed	1.3-1.4 mm	30-40 psi	
Pressure Feed	1.0-1.8 mm	50-60 psi	10-14 oz/min
Air Assist Airless	9-13 Thou	1000-1800 psi	
Airless	11-13 Thou	1700-3000 psi	