

① Product & Substrate Temperature

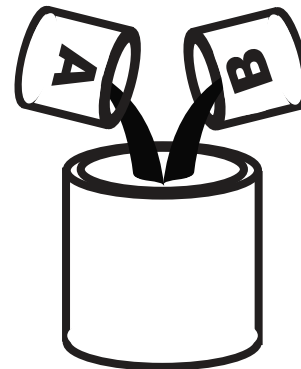


25°C (77°F)
20°C (68°F)

20-25 °C (68-77 °F)*



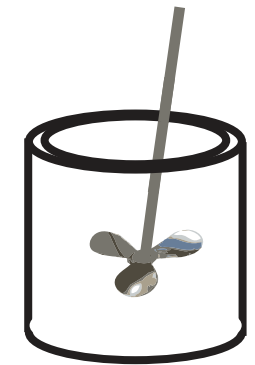
② Product Preparation



4 Parts Component A
1 Part Component B



③ Mixing



Paint must be thoroughly mixed.

④ Spraying Viscosity



14 seconds**

As necessary**



⑤ Spray Gun Setup

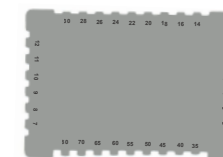


Feed Type	Fluid Tip	Application Pressure	Fluid Delivery
Siphon Feed	1.6-1.8 mm	40-50 psi	
Gravity Feed	<1.4 mm	30-40 psi	
Pressure Feed	1.0-1.4 mm	55-65 psi	12-14 oz/min
Air Assist Airless	9-13 Thou	1000-1800 psi	
Airless	11-13 Thou	1700-3000 psi	



⑥ Application

Recommended Film Thickness



3.0 - 6.0 mils wet



1.0 - 2.0 mils DFT

conventional

airless

**Viscosity: 14 seconds/as necessary
using a Ford 4 Cup (white)**

** Spraying viscosity and thinning will depend on ambient conditions, spray equipment used, and on the desired surface finish.